

FRONT SUSPENSION ARM SUB-ASSY LOWER NO.1 LH (MTM)

260F8-01

REPLACEMENT

HINT:

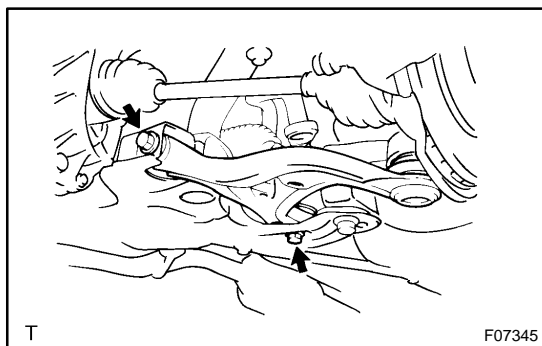
- COMPONENTS: See page 26-2
- Remove the RH (MTM) following the same procedures as for the suspension lower arm LH (ATM).

1. REMOVE FRONT WHEELS

2. SEPARATE FRONT SUSPENSION ARM SUB-ASSY LOWER NO.1 LH (See page 26-15)

SST 09628-00011

3. SEPARATE STABILIZER BAR FRONT (See page 26-15)

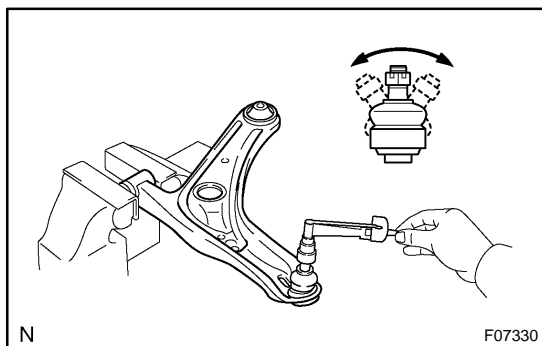


4. REMOVE FRONT SUSPENSION ARM SUB-ASSY LOWER NO.1 LH

- (a) Remove the 2 bolts, nut and the front suspension arm sub-assy lower No.1

NOTICE:

Do not turn the nut.

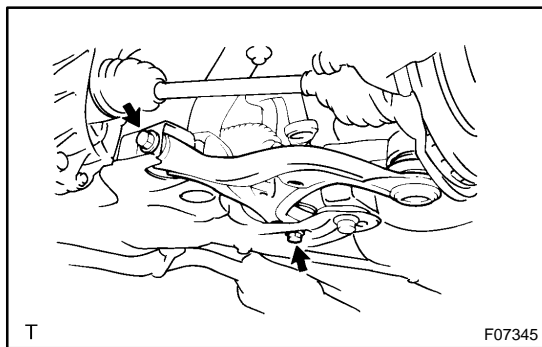


5. INSPECT FRONT SUSPENSION ARM SUB-ASSY LOWER NO.1 LH

- (a) As shown in the illustration, flip the ball joint stud back and forth 5 times before installing the nut.
- (b) Using a torque wrench, turn the nut continuously at a rate of 2 to 4 seconds per turn and take the torque reading on the 5th turn.

Turning torque:

5.0 N·m (51 kgf·cm, 44 in·lbf) or less



6. TEMPORARILY TIGHTEN FRONT SUSPENSION ARM SUB-ASSY LOWER NO.1 LH

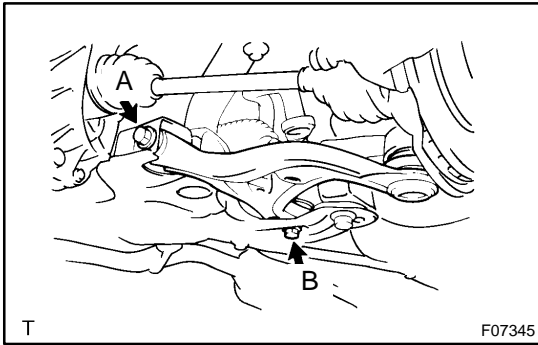
- (a) Temporarily tighten the front suspension arm sub-assy lower No.1 LH with the 2 bolts and the nut.

7. CONNECT FRONT SUSPENSION ARM SUB-ASSY LOWER NO.1 LH (See page 26-15)

8. CONNECT STABILIZER BAR FRONT (See page 26-15)

9. INSTALL FRONT WHEELS

Torque: 103 N·m (1,050 kgf·cm, 76 ft·lbf)



10. FULLY TIGHTEN FRONT SUSPENSION ARM SUB-ASSY LOWER NO.1 LH

- (a) Install the lower suspension arm with the 2 bolts.

Torque:

Bolt A: 88 N·m (900 kgf·cm, 65 ft·lbf)

Bolt B: 132 N·m (1,350 kgf·cm, 97 ft·lbf)

NOTICE:

Do not turn the nut.

11. INSPECT AND ADJUST FRONT WHEEL ALIGNMENT (See page 26-7)